

**12-18 t**

**G series Lithium Battery Counterbalance Forklift Truck**



**HELI**



**ANHUI HELI CO., LTD.**

Add / No.668, FangXing Road, Hefei, China

Fax / +86-551-63639966

Tel / +86-551-63639068(America); 63639258(Europe); 63639358(Asia);  
63662105(Africa & Middle East); 63639530(Overseas Marketing)



LinkedIn



YouTube



Facebook

Design&Print:Fokell Printing 20250707

\* Our products are subject to improvements and changes without notice.

*With more than 60 years  
of Heli technical precipitation*

Drawing on over 60 years of  
technological accumulation  
HELI integrates the strengths of many  
to create quality products.

The Heli 12-18ton forklift can be widely used in enterprises, stations, ports, docks, and ship cabins, etc. It is suitable for handling overweight and oversized goods, as well as for moving and stacking empty containers of certain models.



# A PRODUCT FEATURES



## MATURE PLATFORM

ENSURE THE DURABILITY AND RELIABILITY OF THE PRODUCTS.

The heavy-duty lithium battery models are developed and designed based on mature platforms, with over 68% of the vehicle parts being universal and over 80% of the standardization coefficient. The battery, electric drive, and electronic control systems all adopt standardized and modular designs, effectively reducing spare parts and management costs.

With 60 years of craftsmanship, Heli never stops.

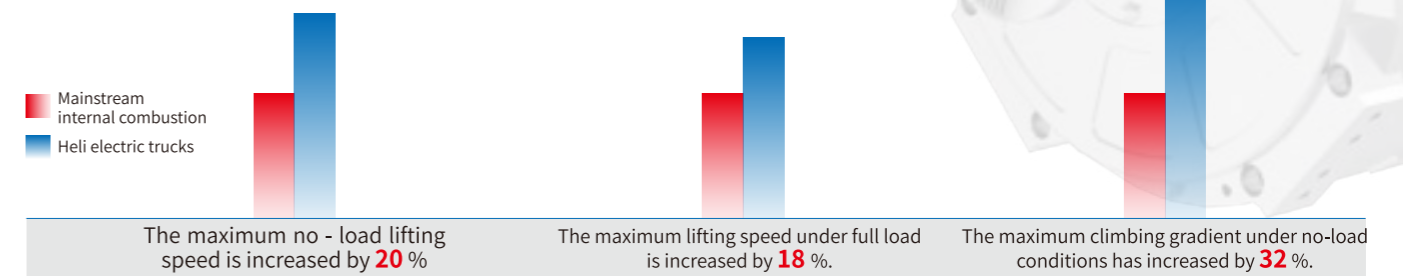
Mastering component development, details determine quality.

Standardized platform design, with a high degree of universality.

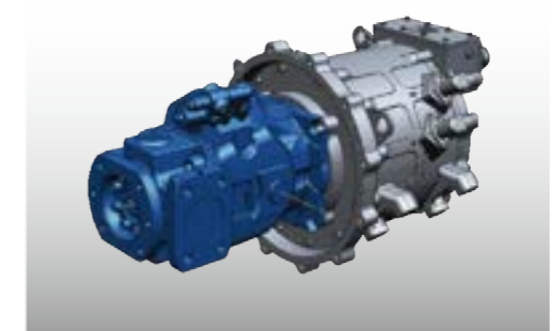
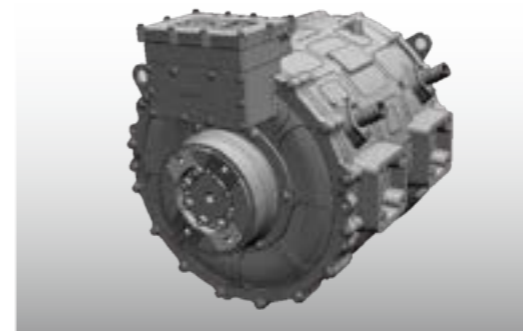
## STRONG PERFORMANCE

COMPARED TO TRADITIONAL INTERNAL COMBUSTION FORKLIFT PERFORMANCE UP TO 32 %.

- Its performance is on par with or even superior to that of mainstream internal combustion heavy-duty forklifts, and it has a high working efficiency.



- The permanent magnet synchronous motor is adopted, which has the advantages of high working efficiency, fast response speed, low failure rate and good energy-saving effect.
- The motor and the electronic control are cooled by water to ensure their superior working condition.



- It adopts a high-speed drive axle specially designed for heavy-duty forklifts, featuring wet braking, dust-proof and water-proof functions, and maintenance-free. It has excellent braking performance, meeting the requirements of long-term and heavy-duty operations. The axle housing has high strength, improving the transfer efficiency and ensuring reliable performance.
- The hydraulic system has excellent performance, good maneuverability, high precision and the whole vehicle is stable and reliable.

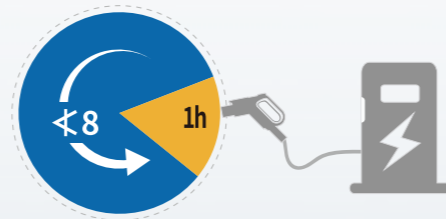


## UNWORRYING BATTERY LIFE

COMPATIBLE WITH NEW ENERGY VEHICLE CHARGING PILES



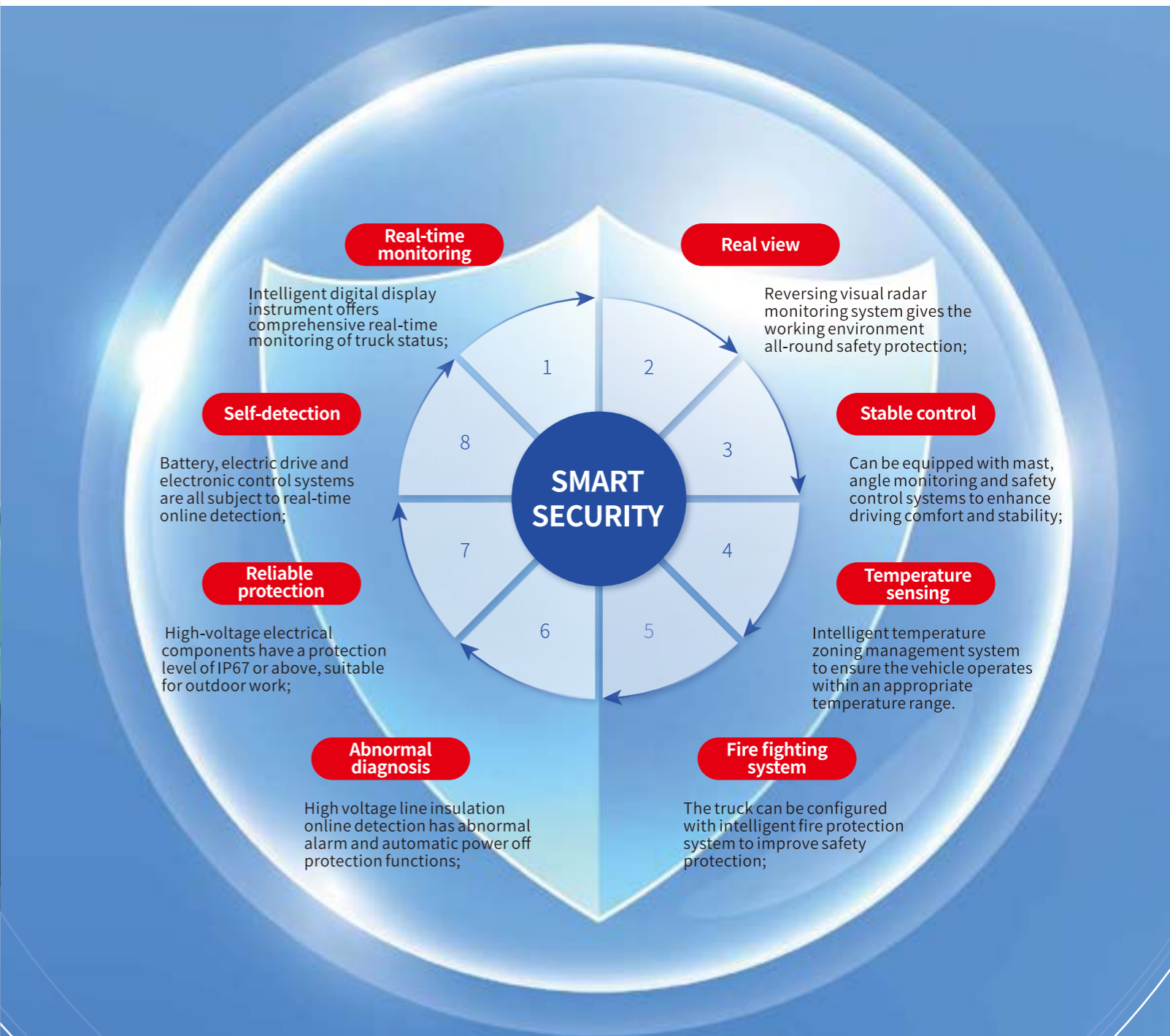
- According to the customer's usage requirements, the maximum optional battery capacity is **175 kWh**. With single-gun charging for 1 hour, it can meet the usage for no less than 8 hours under normal working conditions.



## INTELLIGENT SECURITY

OFFER EIGHT LAYERS OF SAFETY PROTECTION

- The entire vehicle's high-voltage lines are equipped with an online insulation monitoring function to monitor the vehicle's status in real time.
- The high-voltage electrical components have a high protection level (IP67 and above) and are equipped with an intelligent temperature management system, which can meet the all-weather outdoor working requirements.





## COMFORTABLE AND ENVIRONMENTALLY FRIENDLY

PROVIDE CUSTOMERS WITH A RELAXING DRIVING EXPERIENCE



- Vibration reduction: The fully suspended knitted fabric seats significantly enhance the riding comfort.
- Noise reduction: The fully enclosed electrically operated tilting cab reduces the noise transmission of the entire machine.
- Wide vision mast: Good operating visibility.
- Standard rear working light: Convenient for night work.
- Rich instrument display: Friendly human-machine interface, allowing timely acquisition of the vehicle's status to ensure safe driving and stable operation.
- Fully hydraulic power steering: Light and flexible steering operation.
- Standard cold and warm high-pressure electric split air conditioning: High energy utilization rate, reasonable air duct layout, providing a comfortable operating environment for the driver.
- Mast movement is controlled by an aviation joystick, making operation more convenient.

- The vehicle operates with low noise, reducing noise pollution.
- It works purely on electricity and does not use fossil fuels, achieving "zero emissions".

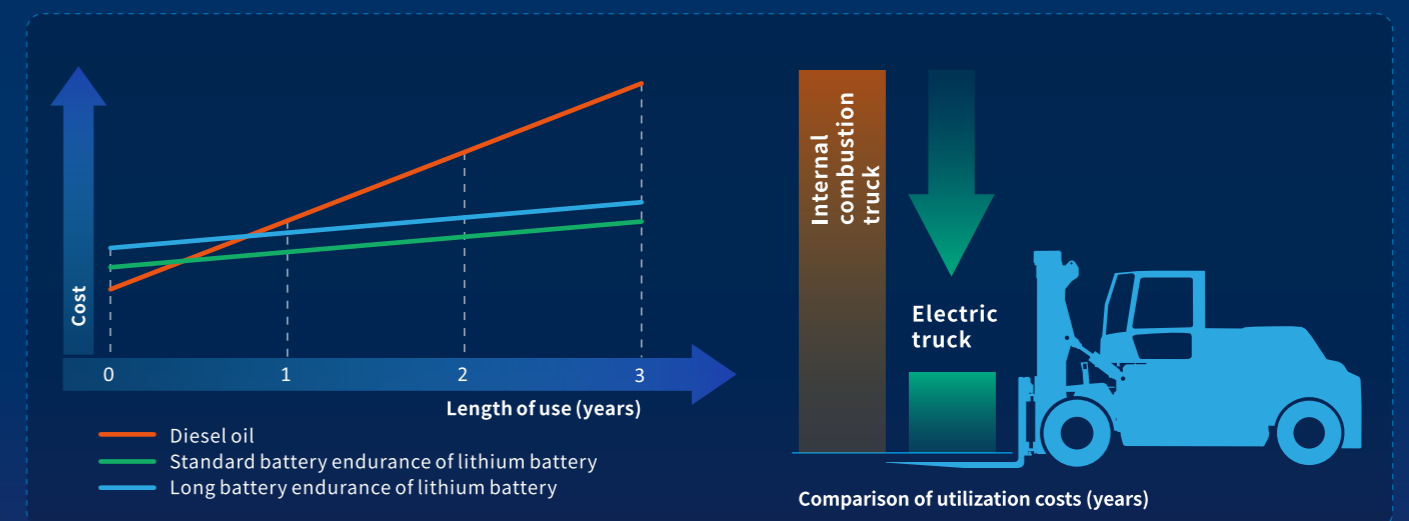
## CONVENIENT MAINTENANCE AND REPAIR

THE COMPREHENSIVE USAGE COST IS ONLY 23% OF THAT OF INTERNAL COMBUSTION FORKLIFTS.

- The cab can be tilted at a large angle, providing ample space for maintenance and repair.
- The adoption of a new type of built-in oil suction filter in the fuel tank makes it more convenient to replace the filter element.
- The battery box is integrated with a standard box made by Heli and features a closed box body and plug-in connectors, ensuring greater safety during production, use and maintenance.
- The battery, electric drive and electric control systems all adopt standardized and modular designs, effectively reducing spare parts and management costs.



- Equipped with kinetic energy recovery technology, it recovers energy and supplements it to the battery, further enhancing system efficiency and overall vehicle range. The annual comprehensive usage cost of an electric vehicle is only 23% of that of an internal combustion vehicle.

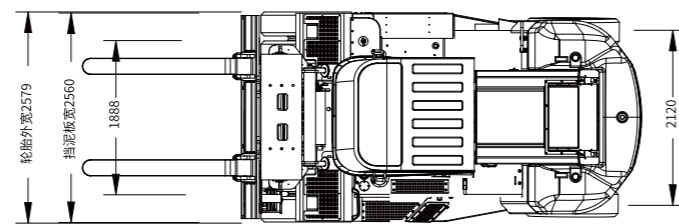
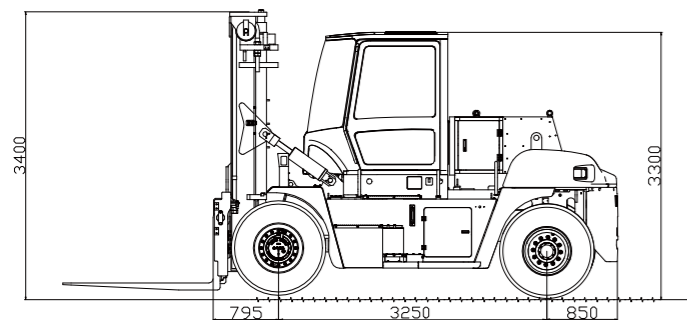


• Due to the differences in working conditions and the fluctuations in electricity prices and oil prices, etc., the data may vary. The above information is for reference only.

# B TECHNICAL PARAMETERS

## Main technical parameters

Characteristics							
1.01	Model		CPD120-A20RLiG-09	CPD135-A20RLiG-06	CPD150-A20RLiG-06	CPD160-A20RLiG-06	CPD180-A20RLiG-06
1.02	Rated capacity	kg	12000	13500	15000	16000	18000
1.03	Load center distance	mm	900	600	600	600	600
1.04	Power Type		Electric	Electric	Electric	Electric	Electric
1.05	Drive Type		Seat type	Seat type	Seat type	Seat type	Seat type
1.06	Overhang(front)	mm	795	795	795	795	795
1.07	Wheelbase	mm	3250	3250	3250	3250	3250
Weight							
2.01	Total weight(Including Battery)	kg	20300(20750)	20300(20750)	20300(20750)	20300(20750)	21300(21750)
Size							
3.01	Mast tilt angle (forward/backward)	°	6/12	6/12	6/12	6/12	6/12
3.02	Lifting height (standard)	mm	3000	3000	3000	3000	3000
3.03	Minimum turning radius	mm	4500	4500	4500	4500	4500
Performance							
4.01	Maximum travel speed (laden/unladen)	km/h	22/23	22/23	22/23	22/23	22/23
4.02	Maximum lift speed (laden/unladen)	mm/s	425/450	425/450	425/450	425/450	425/450
4.03	Maximum Descending Speed (laden/unladen)	mm/s	450/455	450/455	450/455	450/455	450/455
4.04	Maximum Tractive Force (laden/unladen)	kN	98/65	98/65	98/65	98/65	98/65
4.05	Maximum Gradeability (laden/unladen)	%	18/18	18/18	18/18	18/18	18/18
Battery							
5.01	Battery Voltage/ Capacity (K5) (Optional)	V/Ah	(579.6V/302Ah) 618.24V/228Ah	(579.6V/302Ah) 618.24V/228Ah	(579.6V/302Ah) 618.24V/228Ah	(579.6V/302Ah) 618.24V/228Ah	(579.6V/302Ah) 618.24V/228Ah
Motor and Controller							
6.01	Drive Motor Power (S2-60min)	kW	120	120	120	120	120
6.02	Lifting Motor Power (S3-15%)	kW	60	60	60	60	60
Charger Options							
7.01	Huawei HWCD18 200-750V120kW charging pile						
7.02	Aipura 120kW dual gun DC integrated charging pile						



## Wide Vision Basic Mast

Mast Model	Maximum Lifting Height(mm)	Carrying Capacity (Load Center 600/900 mm) (kg)					Full height of the lowered mast (mm)	Mast Tilt Angle (α/β)(°)
		CPD120-A20RLiG-09	CPD135-A20RLiG-06	CPD150-A20RLiG-06	CPD160-A20RLiG-06	CPD180-A20RLiG-06		
M300	3000	12000	13500	15000	16000	18000	3365	6° /12°
M350	3500	12000	13500	15000	16000	18000	3450	6° /12°
M400	4000	12000	13500	15000	16000	18000	3700	6° /12°
M450	4500	12000	13500	15000	16000	18000	3950	6° /12°
M500	5000	12000	13500	15000	16000	18000	4200	6° /6°
M550	5500	11000	12500	14000	15000	17000	4450	3° /6°
M600	6000	10000	11500	13000	14000	16000	4700	3° /6°
M650	6500	9000	10500	12000	13000	15000	4950	3° /6°

## Options sheet

Model number	Standard configuration	Optional configuration
Safety class	Rotating warning light	Battery built-in fire extinguishing system
	Turn signal light	Centralized fire fighting system
	Reverse buzzer	-
	Visual reverse radar	-
	Identification module meeting TSG 81	-
	Tilt oil circuit self-locking valve	-
Mast/ attachments	Lift oil circuit self-locking valve	-
	4m mast	-
	Side shift fork positioner	-
	-	Whole vehicle lifting spreader
Comfort Class	-	Full free mast
	Grammer full suspension seats	boom
	Full hydraulic power steering	Fork arm extension
	USB charging port	-
	Radio	-
Tires	Air conditioning for heating and cooling	-
	Patterned durable pneumatic tires	Full solid tires
	-	Front solid tires / inflatable rear tires
Else	-	Inflatable front tires / rear solid tires
	Patterned durable pneumatic tires	Centralized lubrication system
	Electric tilting cab	Weighing system
	Truck accompanying tools	-
	Truck networking terminal	-
Charger Options	Double gun charging port	-
	Fixed/variable hydraulic system	-
	Hydraulic circuit oil filter	-
	Wet brake	-

## Attachments options



- **Side shift forks (standard)**  
It has the functions of fork positioners and side shift to improve the working efficiency



- **Fork arm extension**  
Effective extension of fork, suitable for larger shape cargo handling



- **Boom**  
Suitable for goods in coils of steel, wire, etc



- **Arm**  
Lifting cargo safely and efficiently



- **Pipe and wire spreader**  
Suitable for the lifting of bundles of steel bars, steel pipes and other goods